

OpenStreetMap on PostgreSQL pgcon 2009



Steven Singer
ssinger_pg@sympatico.ca
ssinger@radintl.com
IRC: stevenSn
May 2009

Map of the hour

- What is a free map
- How OpenStreetMap works
- How to use the data with PostgreSQL

What is OpenStreetMap

- A project to collect & distribute free geographic data
- A wiki-editable map of the world
- CC-by-SA licensed



Is Your Map Free?

Flicker: izarbeltza

Free to See

NO
BOTTOM
PRICES

FREE \$1
MAPS



Free to give

- Publishing
- Distribution (embedded devices)
- Sell



[Permalink](#)



View map

Edit Map Style

Free to style

Feedback

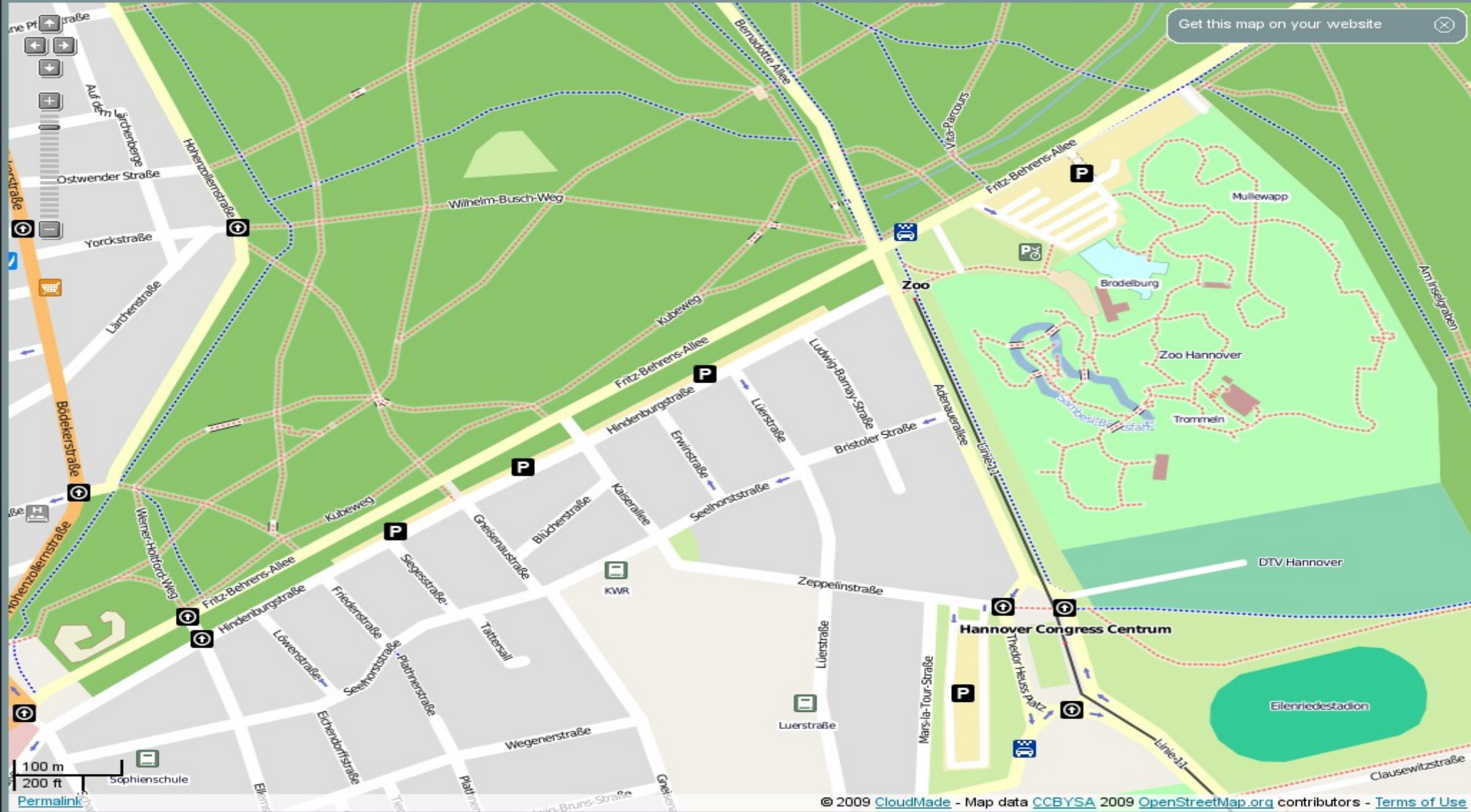
Get Directions

Change Style

Export

Share

Get this map on your website



100 m
200 ft
Permalink

© 2009 CloudMade - Map data © 2009 OpenStreetMap.org contributors - Terms of Use

© 2009 CloudMade. Map data © 2009 OpenStreetMap.org contributors | Terms and Conditions | Privacy Policy





View map

Edit Map Style

Feedback

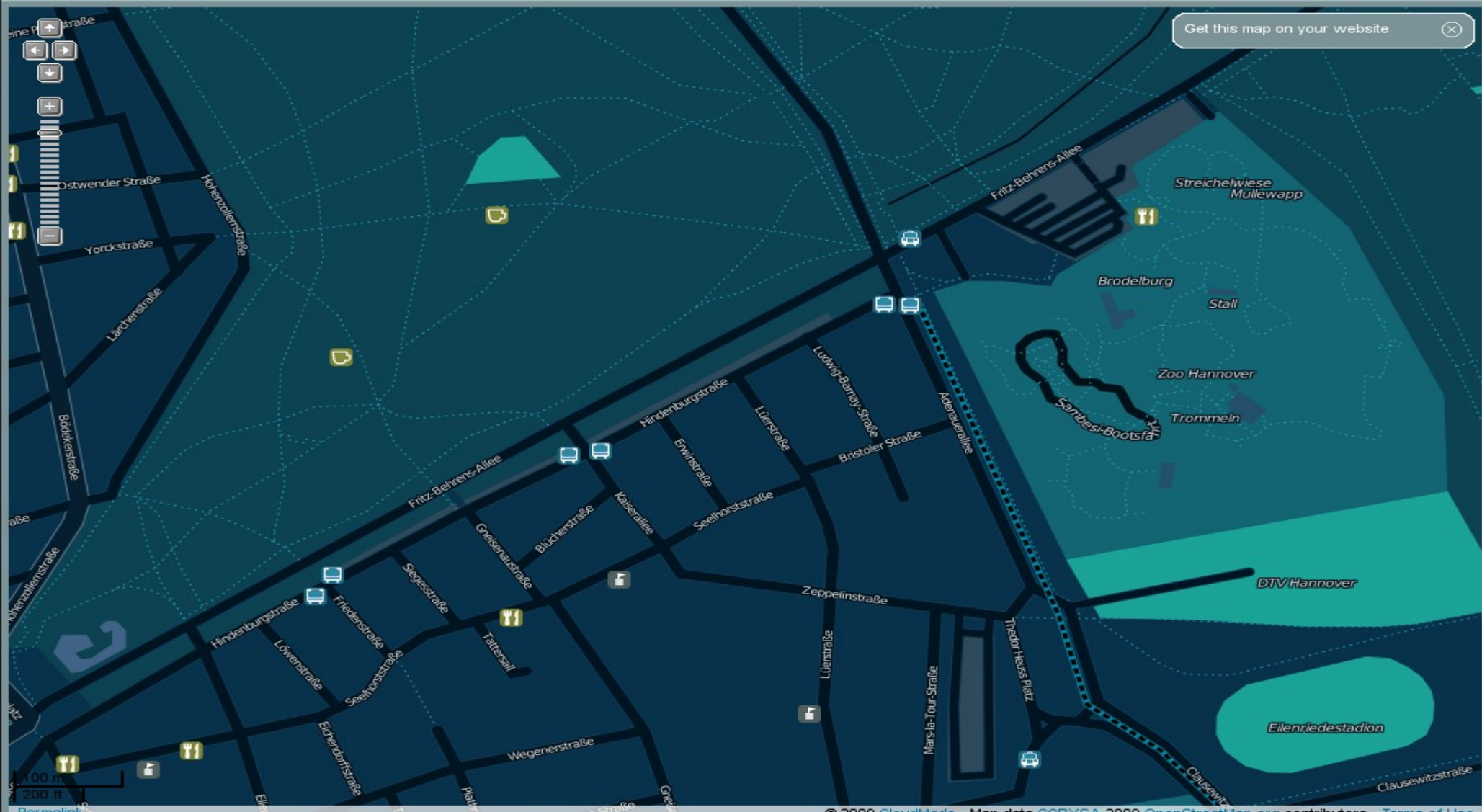
Get Directions

Change Style

Export

Share

Get this map on your website



Permalink





View map

Edit Map Style

Feedback

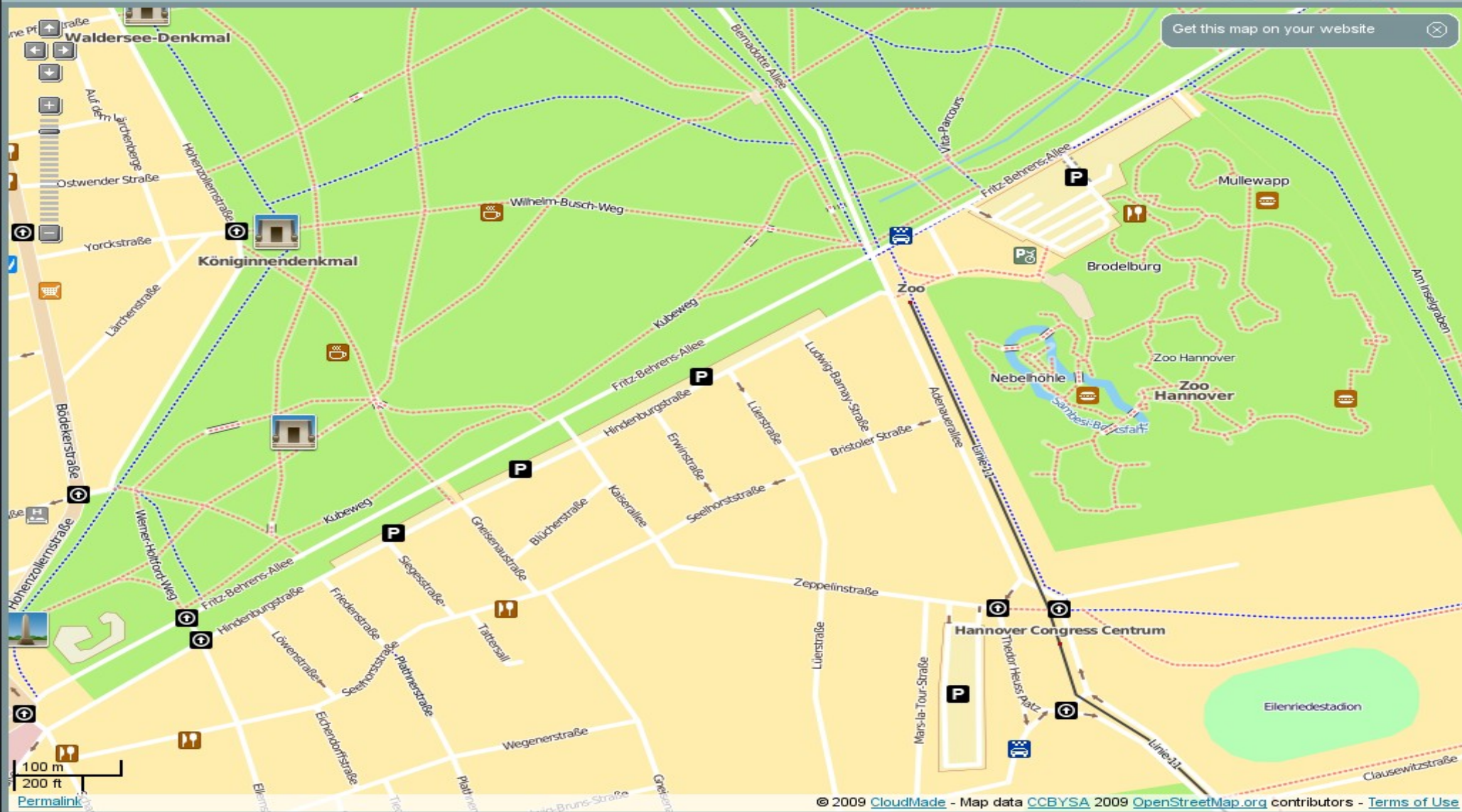
Get Directions

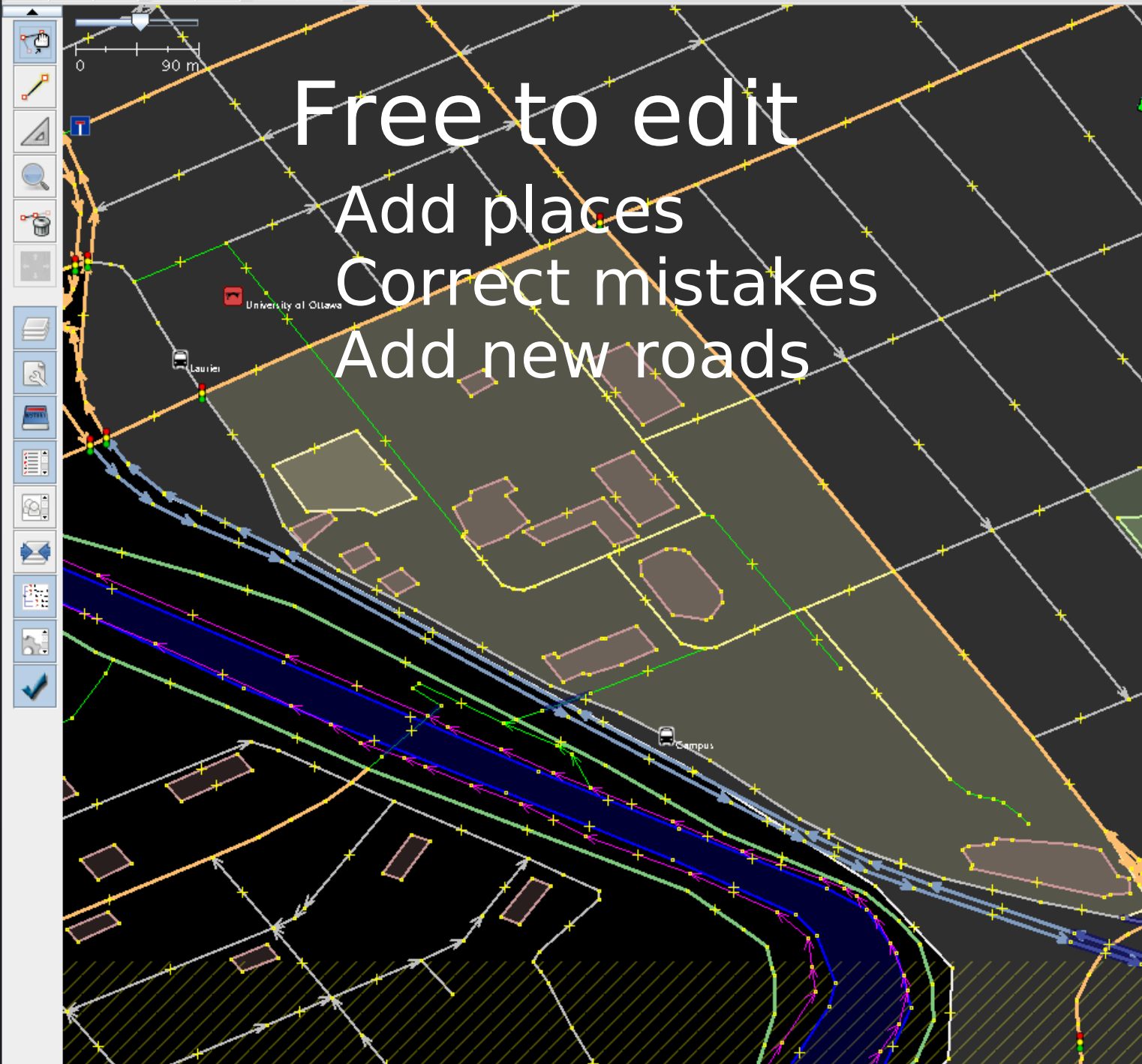
Change Style

Export

Share

Get this map on your website





Free to edit
Add places
Correct mistakes
Add new roads

Layers

- Validation errors
- Data Layer 1
- YAHOO (WebKit)

Properties/Memberships

Please select the objects you want to change properties for.

+ Add Edit Delete

History

Current Selection

Select Reload Search

Command Stack

Relations

- relation (1 member)
- relation (2 members)
- relation (2 members)
- route ("31", 9 members)
- route ("34", 8 members)
- route ("36", 14 members)

New Edit Delete

Validation errors

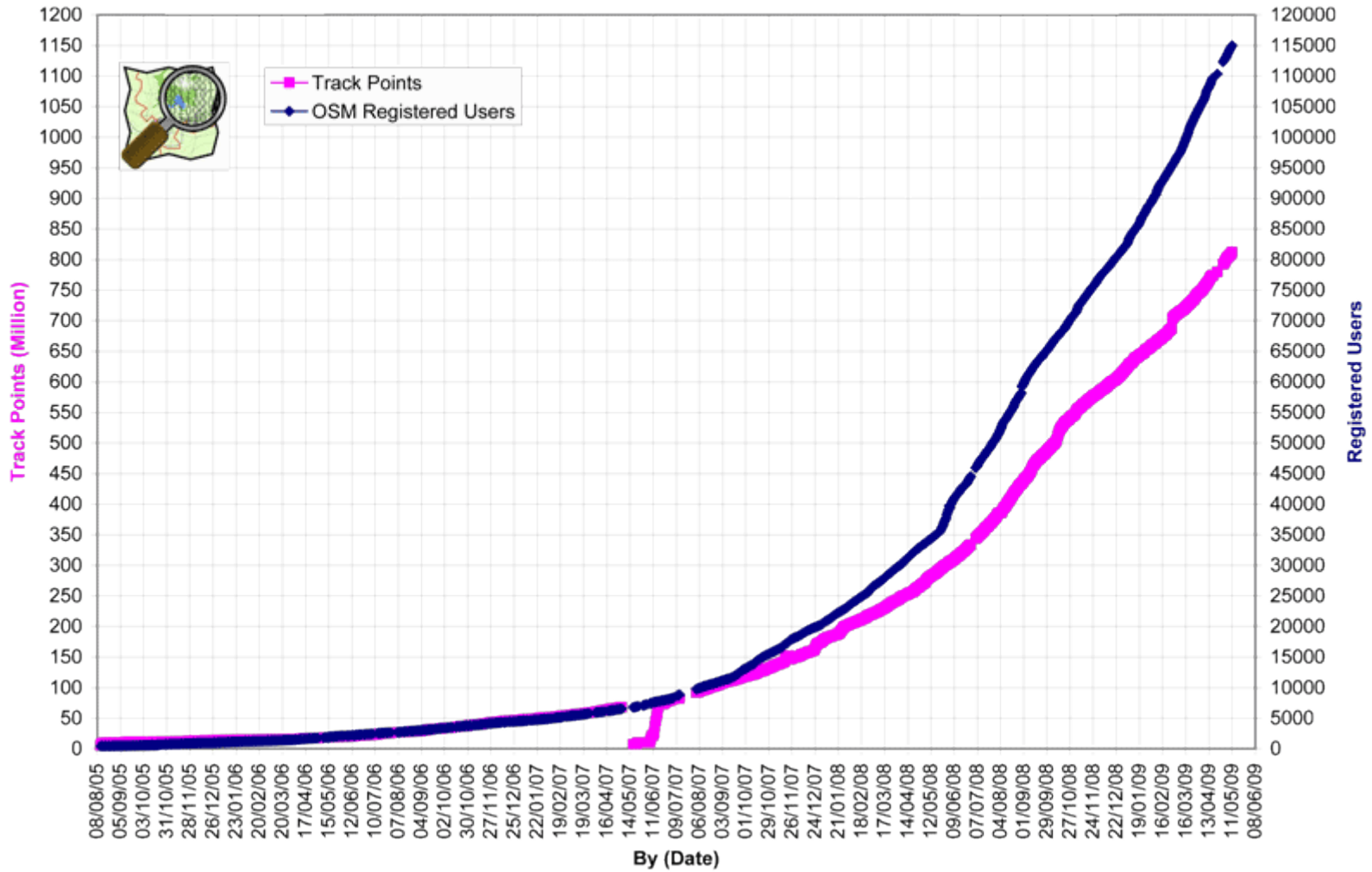
How it got started

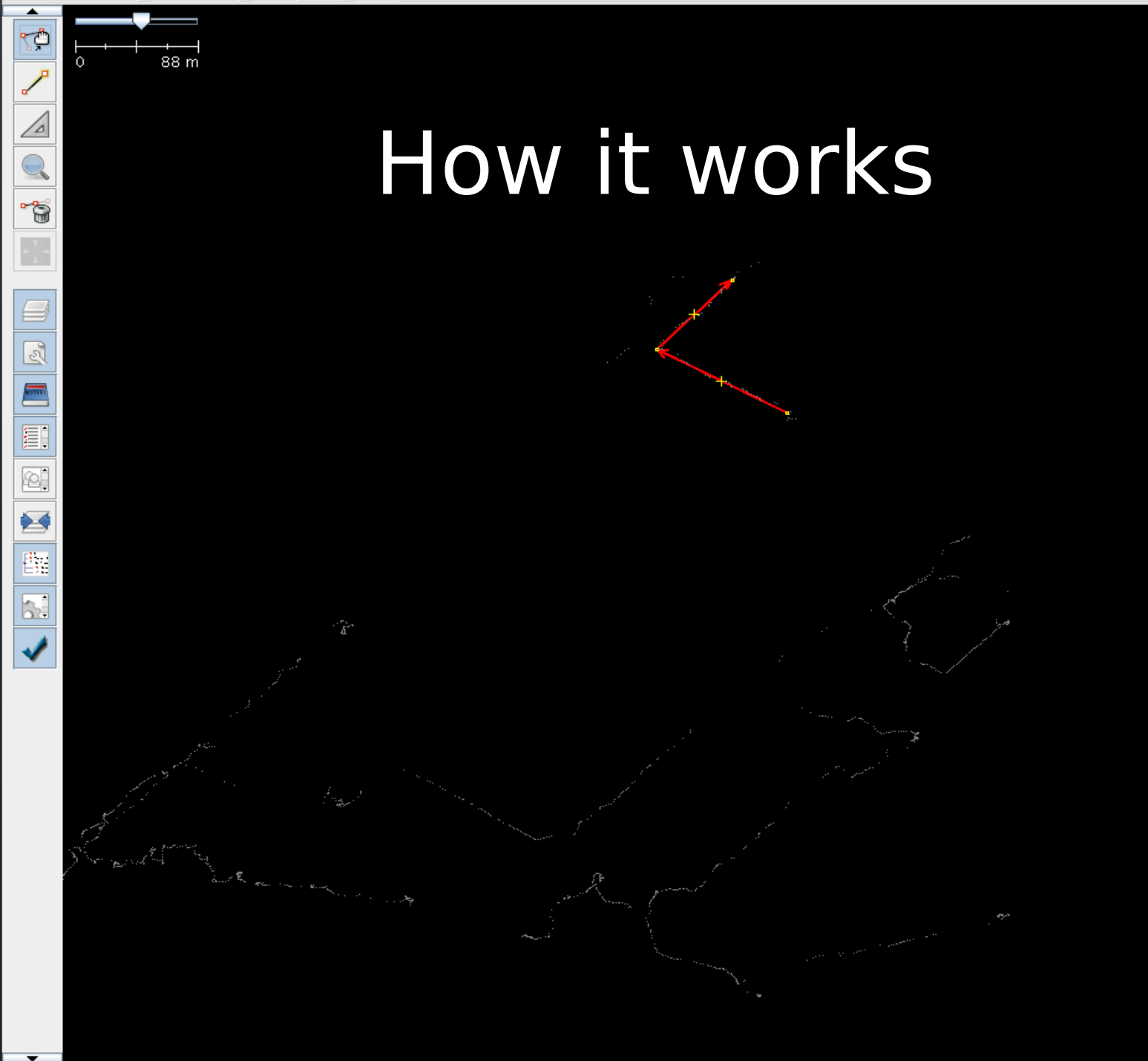
Founded by Steve Coast, Summer of 2004



Crowd Sourcing

OpenStreetMap Database Statistics
Users and User gpx Uploads (track points)





How it works

Layers

- GPX 20090425_170324.log.gpx
- GPX 20090425_163850.log.gpx
- GPX 20090425_163623.log.gpx
- unnamed

Properties/Memberships

Key	Value

History

Current Selection

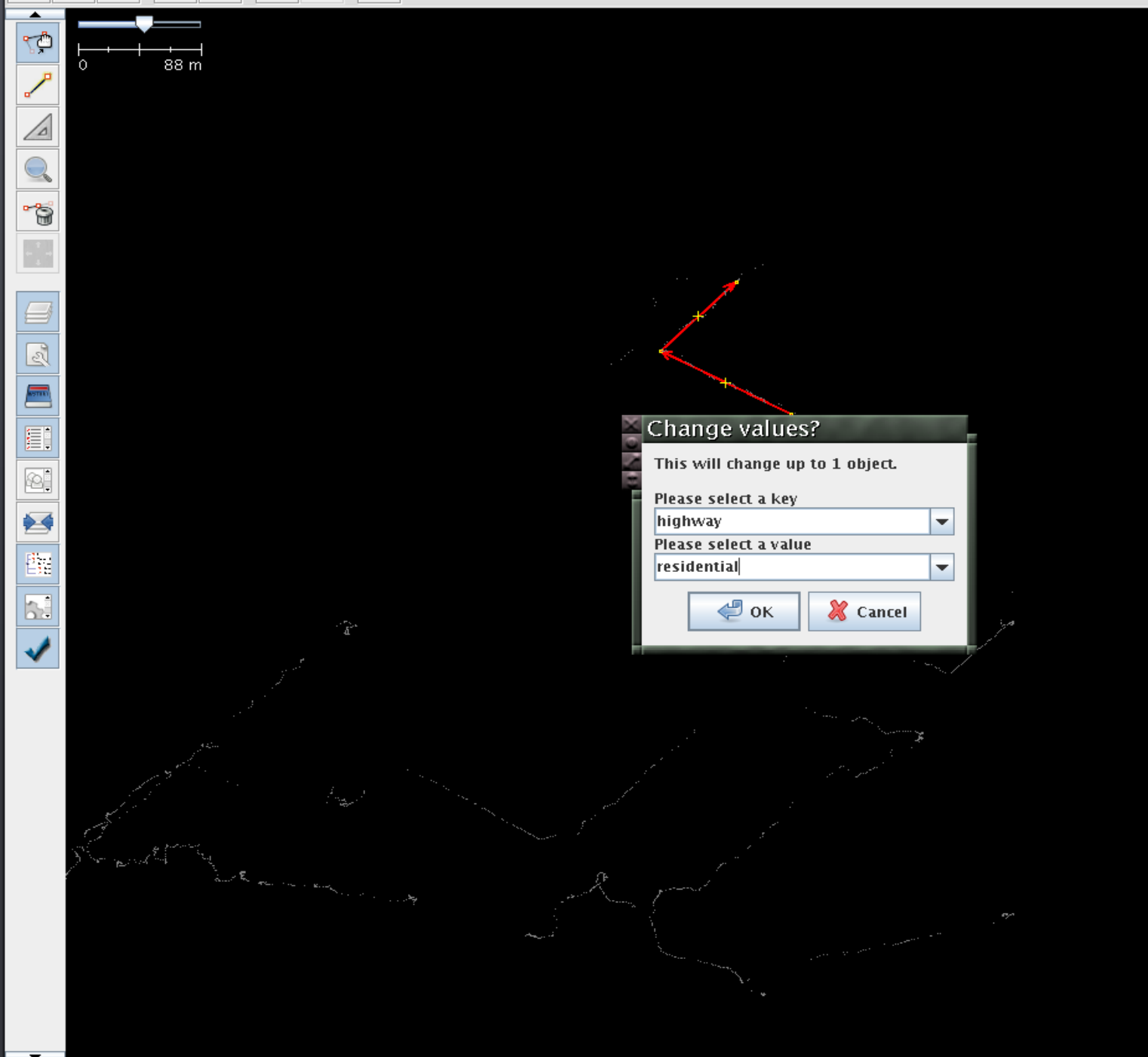
3 nodes

Command Stack

- Sequence: Add node
- Sequence: Add a new node to an existing way
- Sequence: Add a new node to an existing way

Relations

Validation errors



Change values?

This will change up to 1 object.

Please select a key
highway

Please select a value
residential

OK Cancel

Layers

- GPX 20090425_170524.log.gpx
- GPX 20090425_163850.log.gpx
- GPX 20090425_163623.log.gpx
- unnamed

Properties/Memberships

Key	Value
-----	-------

+ Add Edit Delete

History

Current Selection

3 nodes

Select Reload Search

Command Stack

- Sequence: Add node
- Sequence: Add a new node to an existing way
- Sequence: Add a new node to an existing way

Relations

New Edit Delete

Validation errors

Select Validate Fix Ignore

OpenStreetMap



The Free Wiki World Map

OpenStreetMap is a free editable map of the whole world. It is made by people like you.

OpenStreetMap allows you to view, edit and use geographical data in a collaborative way from anywhere on Earth.

OpenStreetMap's hosting is kindly supported by the UCL VR Centre and bytemark.

Help & Wiki News blog Shop Map key

Come to the 2009 OpenStreetMap Conference, The State of the Map, July 10-12 in Amsterdam!

Search Where am I?

Search input field with 'Go' button

examples: 'Alkmaar', 'Regent Street, Cambridge', 'CB2 5AQ', or 'post offices near Lünen' more examples...

Make a Donation

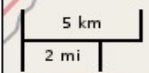


SOME RIGHTS RESERVED

View Edit History Export GPS Traces User Diaries

log in | sign up

Tags Can be anything



Permalink

OpenStreetMap



The Free Wiki World Map

Help & Wiki
News blog
Shop

Come to the 2009 OpenStreetMap Conference, The State of the Map, July 10-12 in Amsterdam!

Search [Where am I?](#)

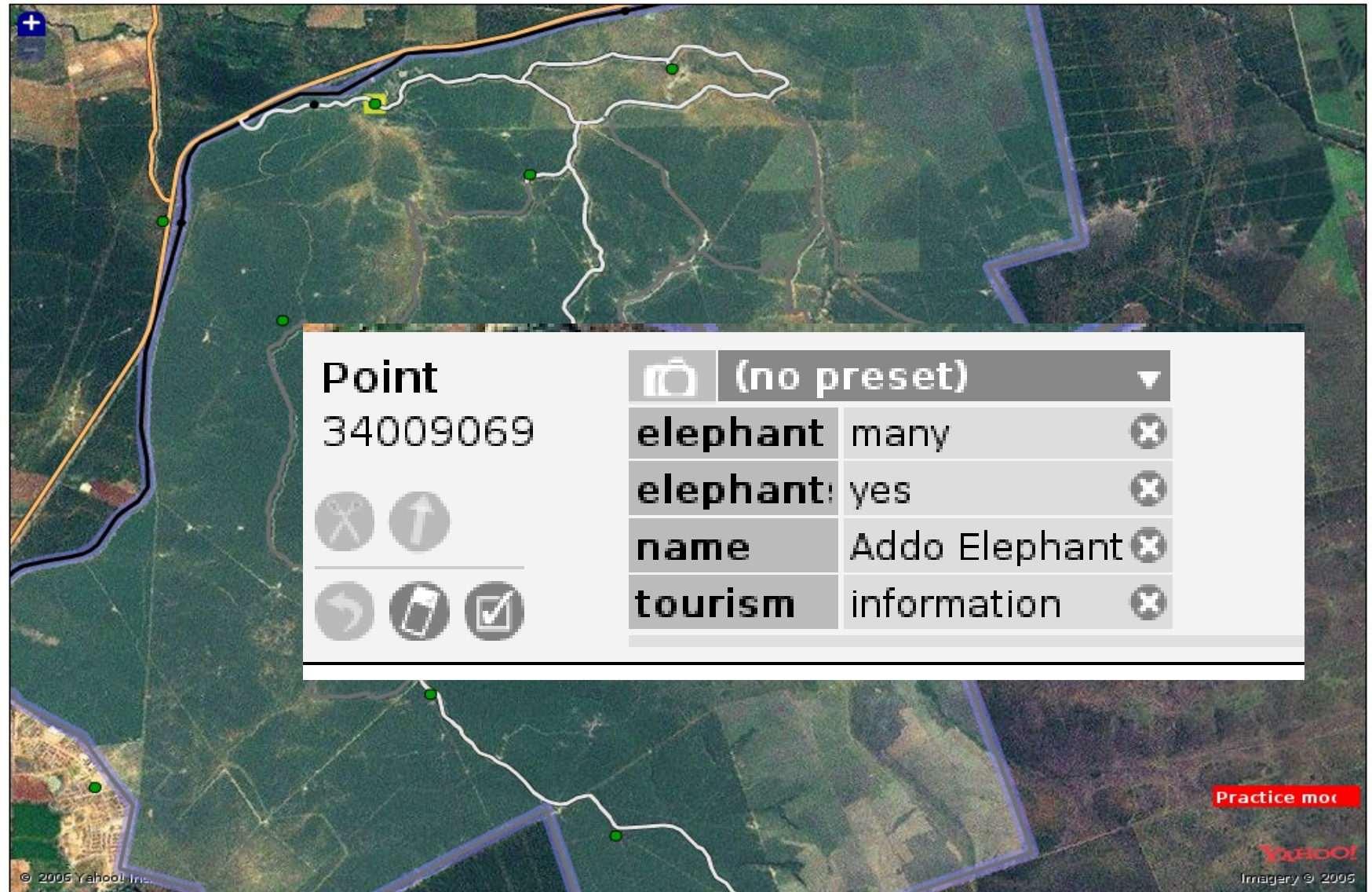
examples: 'Alkmaar', 'Regent Street, Cambridge', 'CB2 5AQ', or 'post offices near Lünen' [more examples...](#)

[Make a Donation](#)



[View](#) [Edit](#) [History](#) [Export](#) [GPS Traces](#) [User Diaries](#)

Welcome, [stevens](#) | [home](#) | [inbox \(0\)](#) | [logout](#)



Point (no preset) ▾

34009069

elephant	many	<input type="checkbox"/>
elephant:	yes	<input type="checkbox"/>
name	Addo Elephant	<input type="checkbox"/>
tourism	information	<input type="checkbox"/>

Point (no preset) ▾

34009069

elephant	many	<input type="checkbox"/>
elephant:	yes	<input type="checkbox"/>
name	Addo Elephant	<input type="checkbox"/>
tourism	information	<input type="checkbox"/>

Practice mo...

YAHOO!
Imagery © 2006

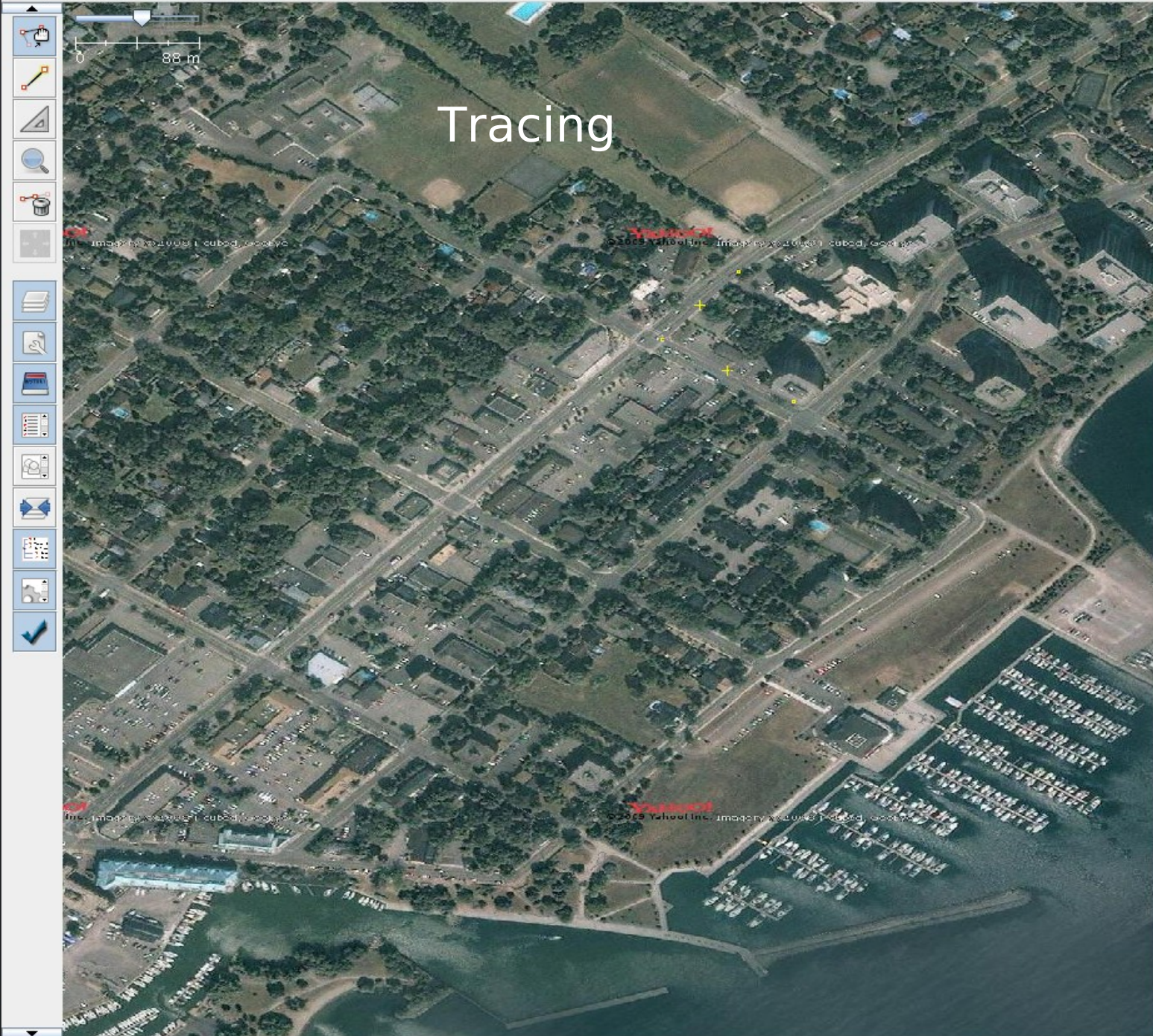
```
<node id='34009069' lat='-33.4442638' lon='25.746064'  
  ' user='Firefishy' xapi:users='CoreyBurger,  
    Firefishy' timestamp='2009-03-23T00:09:07Z'  
    version='2'>  
  <tag k='elephant' v='many'/>  
  <tag k='elephants' v='yes'/>  
  <tag k='name' v='Addo Elephant National Park'/>  
  <tag k='tourism' v='information'/>  
</node>
```

Where does the data come from

- 100,000+ contributors
- GPS traces
- local knowledge
- Bulk imports
- Imagery traces

GPS





Tracing

Layers

- GPX 20090425_170321.log.gpx
- GPX 20090425_163850.log.gpx
- GPX 20090425_163623.log.gpx
- unnamed

↑ ↓ % [Disk Icon]

Properties/Memberships

Please select the objects you want to change properties for.

+ Add Edit Delete

History

Current Selection

Select Reload Search

Command Stack

- Sequence: Add node
- Sequence: Add a new node to an existing way
- Sequence: Add a new node to an existing way

Relations

New Edit Delete

Validation errors

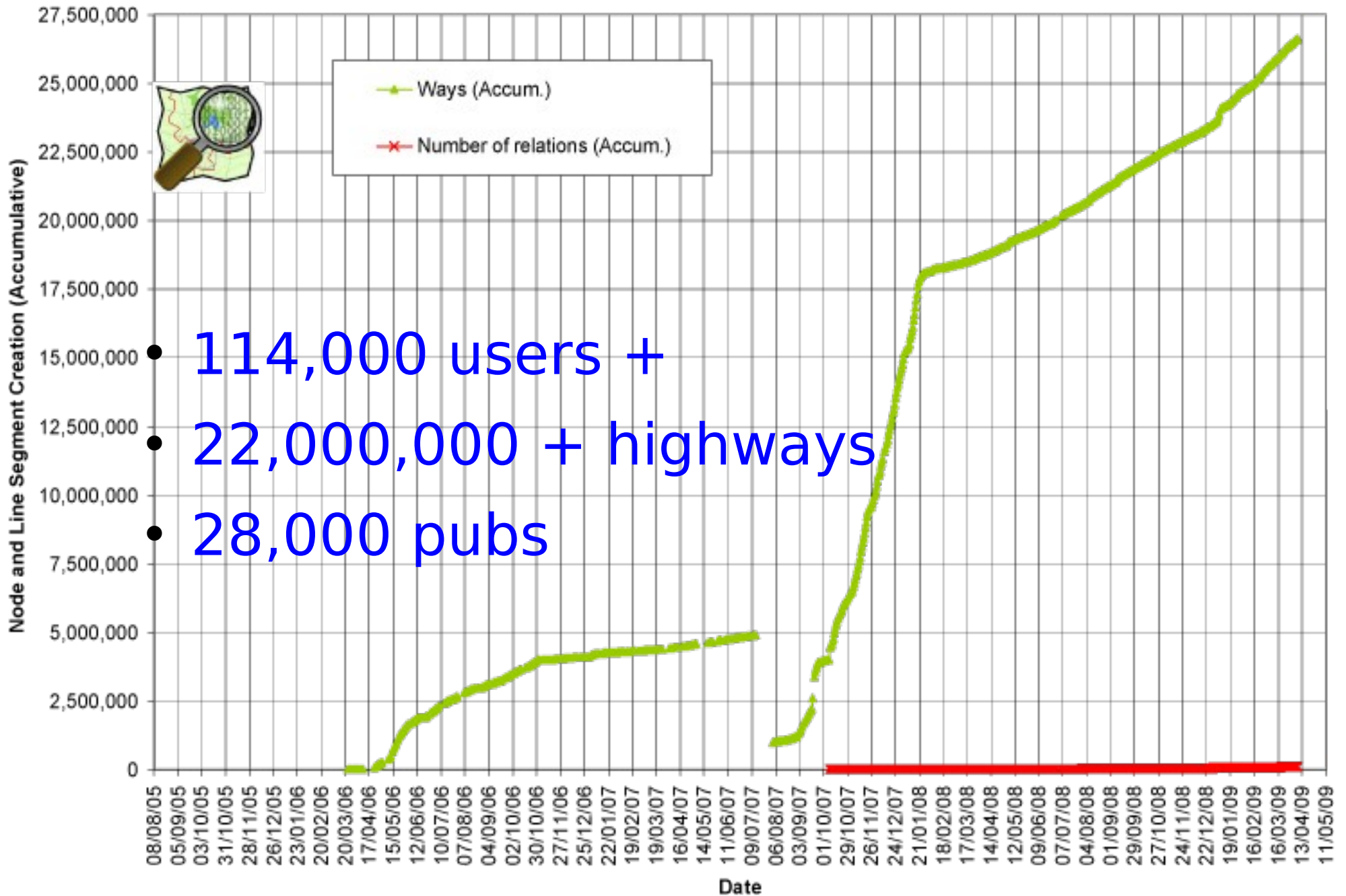
Select Validate Fix Ignore

Data Imports

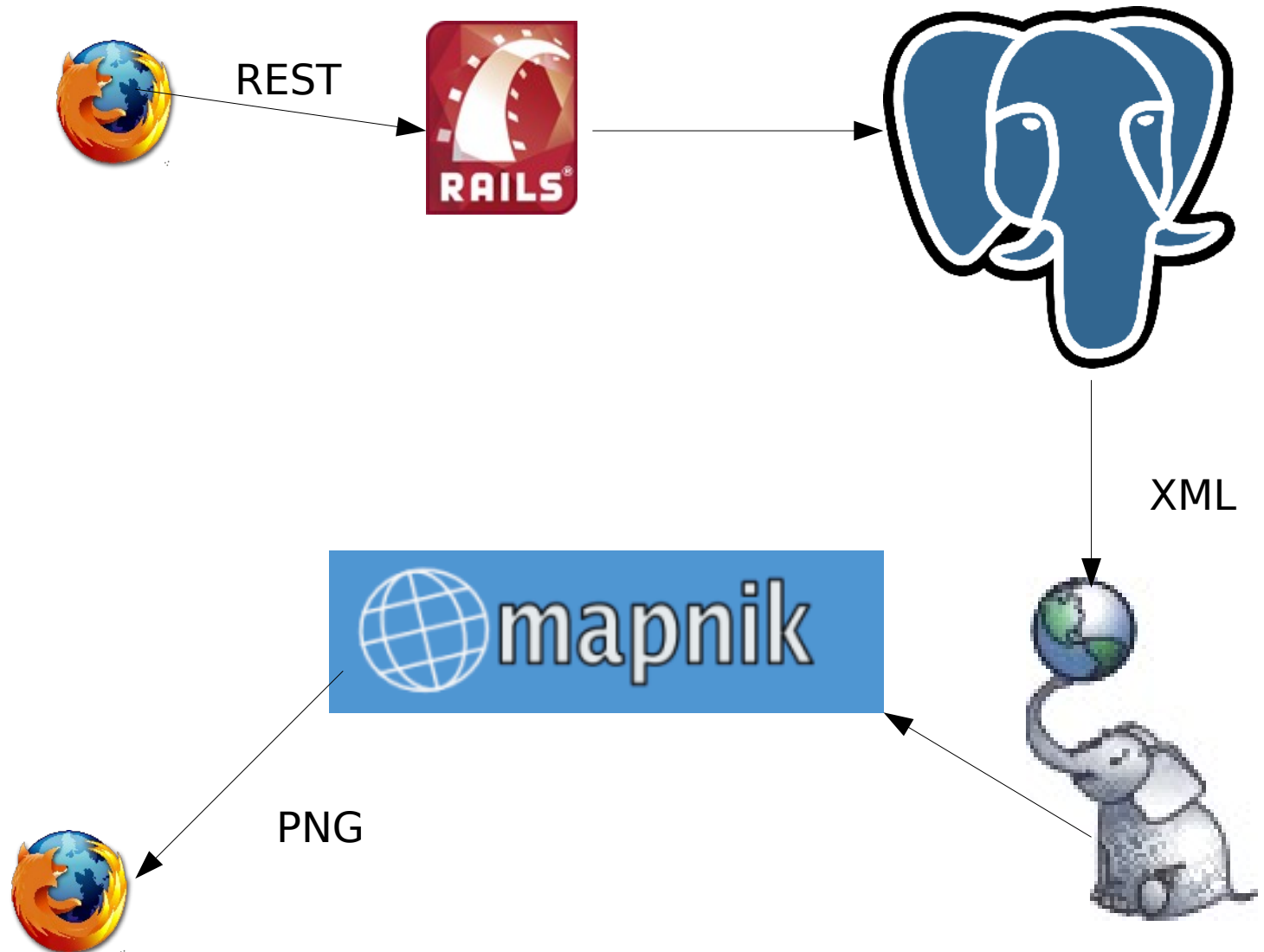
- Copyright compatible datasets
- TIGER, vmap0 (US),
- GeoBase(Canada)
- NAND (Netherlands)

OpenStreetMap Database Statistics

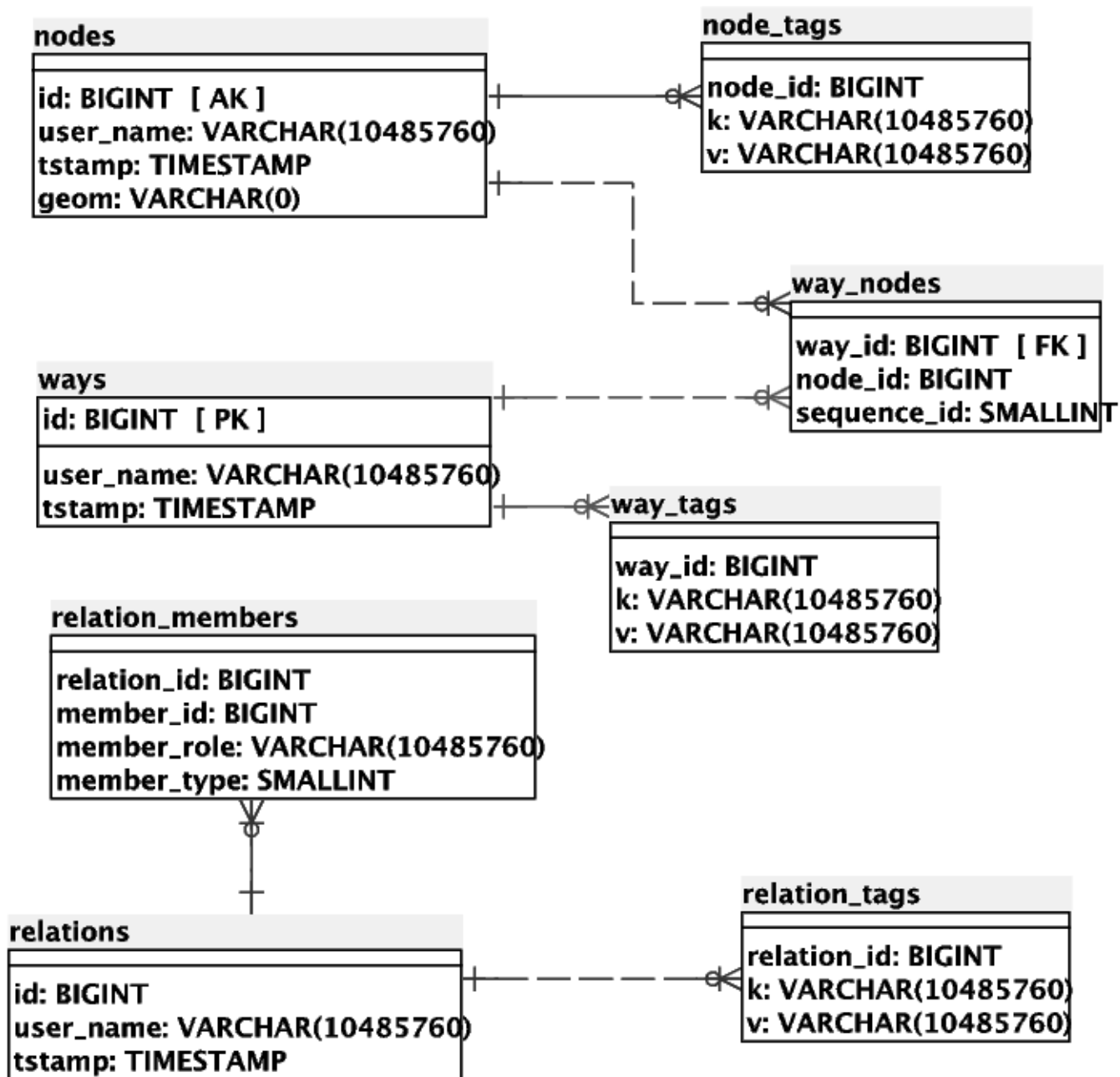
Ways and Relations



Where does the data go?




The simple schema



Why PostgreSQL

- Pre 0.6 Mysql + MYISAM
- Errors could mean only half an edit
- Solution: Transactions
- InnoDB has no text search

PostgreSQL 8.3



2x Intel Xeon Processor E5420 Quad Core 2.5Ghz
2x 73GB (3.5) SAS 15K
10x 450GB (3.5) SAS 15K
30GB of RAM

(pg)-stat

- AVG 7.42M tuples fetched per second
- AVG 1.04k tuples inserted per second
- 800GB

Table	Size(GB)
current_node_tags	99
current_nodes	58
current_way_nodes	44
current_way_tags	20
Historical	
nodes	211
node_tags	119
way_nodes	113
gps_points	94
way_tags	32
ways	14

Planet Dumps

<http://planet.openstreetmap.org>



Osmosis, your own API

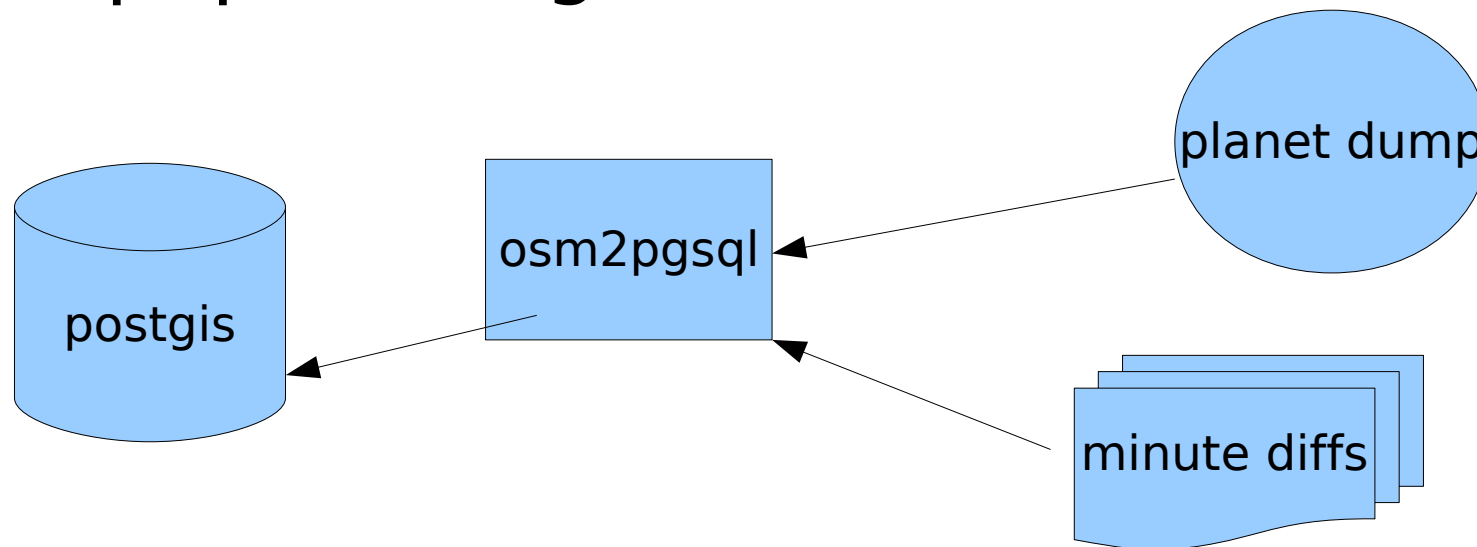
- Populates DB from planet dumps

But I really want to use PostGIS

- Complex Geometries
- Spatial queries

osm2pgsql

- Populates postgis from planet dumps
- Creates spatial objects (lines)
- Populates attribute columns for popular tags



schema

planet_osm_polygon

```
osm_id: INTEGER
amenity: VARCHAR(10485760)
area: VARCHAR(10485760)
barrier: VARCHAR(10485760)
bicycle: VARCHAR(10485760)
boundary: VARCHAR(10485760)
building: VARCHAR(10485760)
foot: VARCHAR(10485760)
highway: VARCHAR(10485760)
historic: VARCHAR(10485760)
junction: VARCHAR(10485760)
landuse: VARCHAR(10485760)
leisure: VARCHAR(10485760)
name: VARCHAR(10485760)
natural: VARCHAR(10485760)
oneway: VARCHAR(10485760)
place: VARCHAR(10485760)
railway: VARCHAR(10485760)
religion: VARCHAR(10485760)
residence: VARCHAR(10485760)
route: VARCHAR(10485760)
sport: VARCHAR(10485760)
tracktype: VARCHAR(10485760)
tunnel: VARCHAR(10485760)
waterway: VARCHAR(10485760)
z_order: INTEGER
way_area: REAL
way: VARCHAR(0)
```

planet_osm_roads

planet_osm_line

planet_osm_point

planet_osm_lines

- Roads
- Rivers
- Trails

planet_osm_points

- POI's
- amenity
- place_of_worship
- name

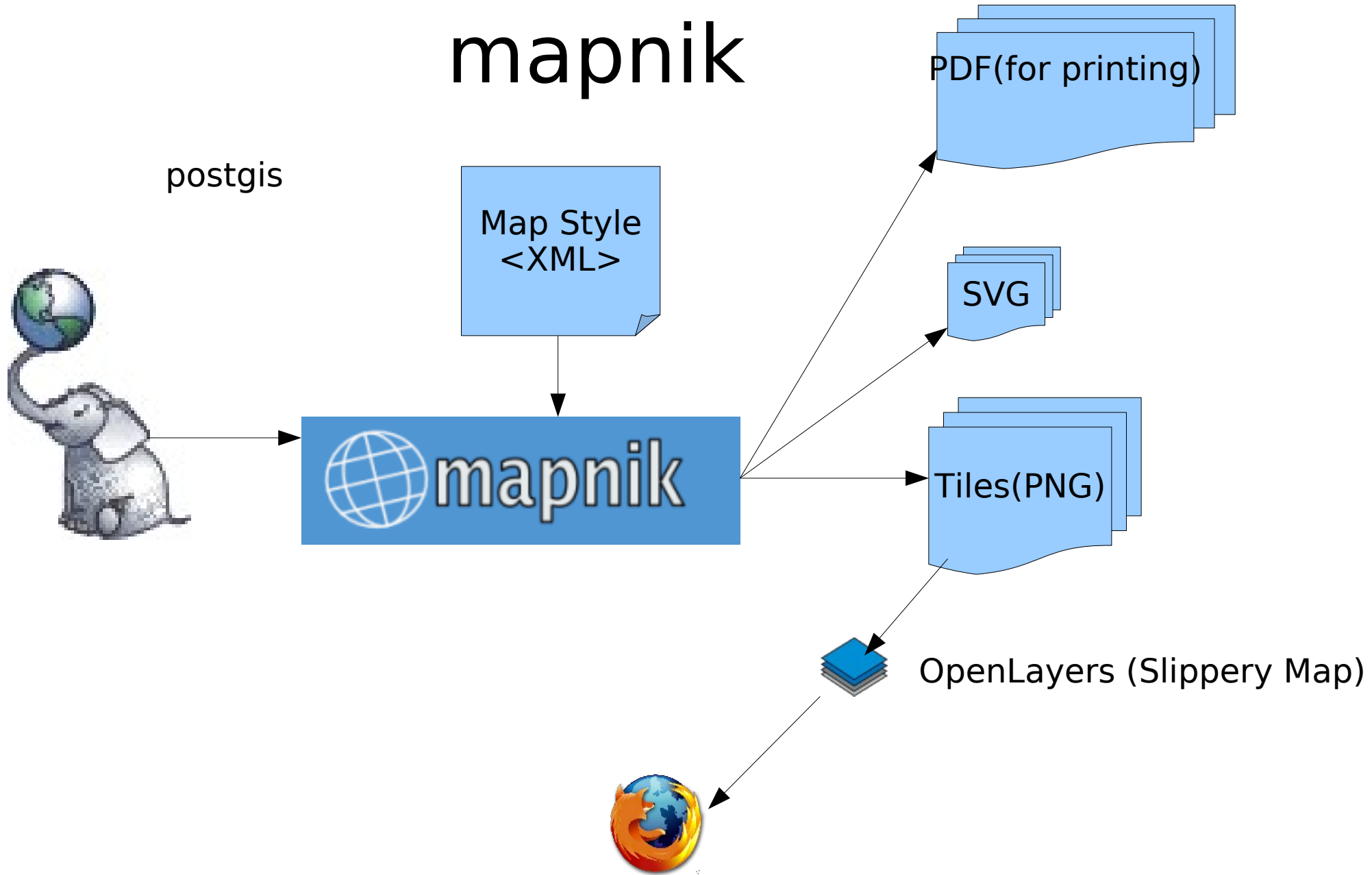
planet_osm_polygons

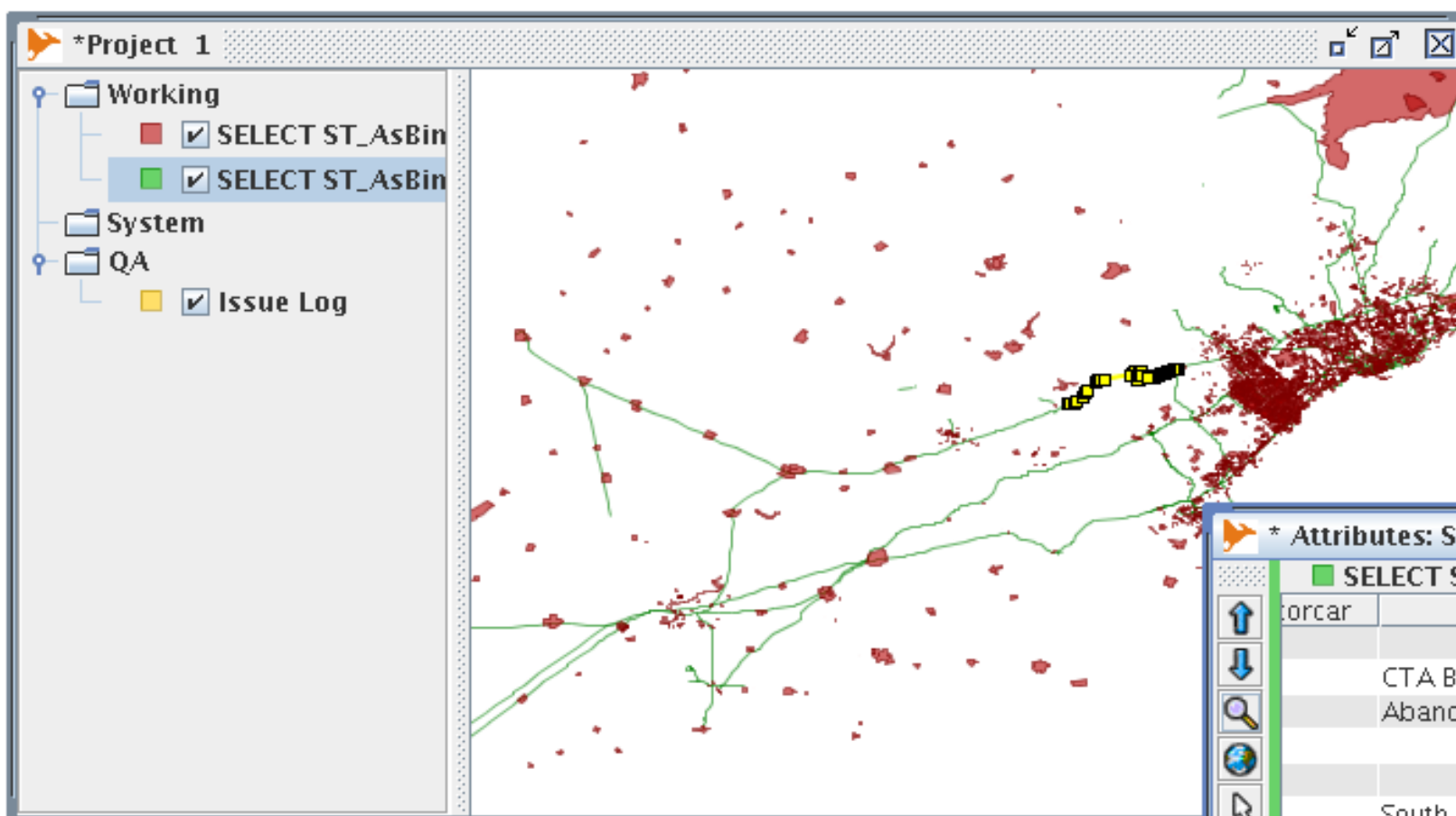
- Areas
- Land use
- building outlines
- lakes

Is my school a polygon or a point?

- Tags can be anything
- You can map a school as a area, buildings, or a single POI
- Must query all tables (UNION?)

mapnik





* Attributes: SELECT ST_AsBinary(way),* FROM

<input checked="" type="checkbox"/>	SELECT ST_AsBinary(way),* FROM plane		
	corcar	name	natural
		CTA Brown/Purple Line	
		Abandoned RR Grade	
		South Dakota State Railroad	
		South Dakota State Railroad	
		South Dakota State Railroad	
		Central Oregon and Pacific RR	
		CTA Red/Purple Lines	
		CTA Red/Purple Lines	
		Central Oregon and Pacific RR	
		Goderich Exeter	
		CTA Red/Purple Lines	

I can do *GIS too

Nearby Pubs

SELECT

p.name,

ST_Distance(ST_Transform(p.way,3348),

ST_Transform(u.way,3348))

FROM planet_osm_point p, planet_osm_point u

where p.amenity='pub'

AND u.name='University of Ottawa' AND

ST_Distance(p.way,u.way)<1;

~

name	distance
Elephant & Castle	541
D'Arcy McGees	764
Drumlins	937
Meadowlands Pub	7259
Montana's Steakhouse	9565
Rockwell's Sports Bar	9622
Tanglewood Pub	10339
Greenfields Pub	16710
Barley Mow Pub	17698
Cheshire Cat Pub	27110
The Thirsty Moose	48771
Queen's Hotel	48771

(12 rows)

Spatial queries

- ST_Intersects
- ST_UNION
- ST_Distance

- How free is your map?
- About OpenStreetMap
- How to use with PostGIS

Questions?

<http://www.openstreetmap.org>

<http://www.mapnik.org>

<http://postgis.refractor.net>

<https://www.openjump.org>

<http://www.qgis.org>

Steve Singer

ssinger_pg@sympatico.ca

ssinger@radintl.com

IRC: StevenSn

Photo Credits

<http://www.flickr.com/photos/izarbeltza/6808410>

9/

<http://www.flickr.com/photos/jyllish/349757985>

4/

<http://www.flickr.com/photos/davidhc/382148384/>

NASA

<http://wiki.openstreetmap.org>

